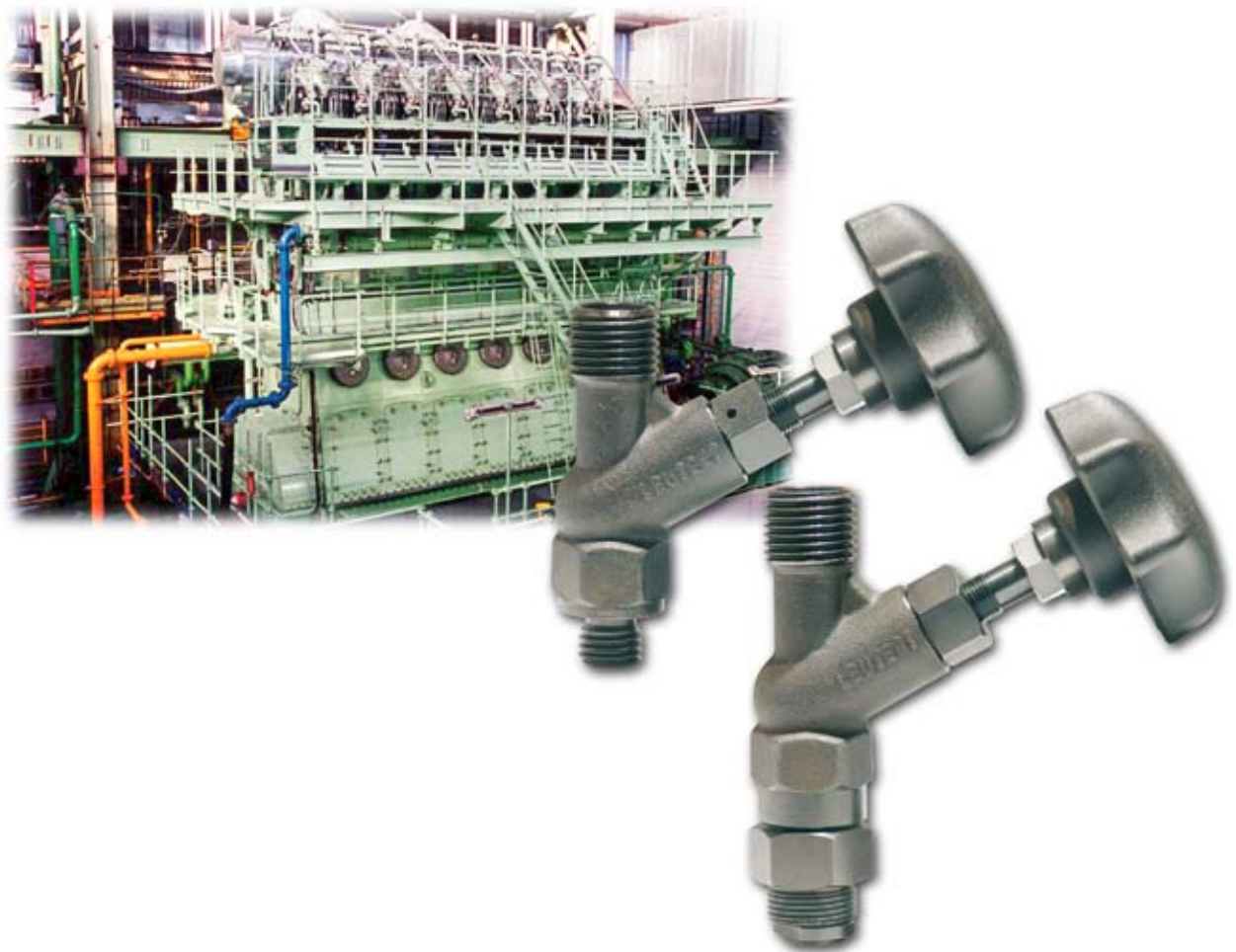


## Indicator Valve



### **Engine components**

for the connection of mechanical Engine Indicators and Digital Pressure Indicators with diesel Engines

## Technical Specifications

Max. working pressure	:	300 bar
Max. working temperature	:	600 °C
Max. spindle stroke	:	approx. 2.5 mm = 2 turns of handwheel
Design	:	Steel housing 1.7225 heat treated, tensile strength over 1000 N/mm <sup>2</sup> valve cone stainless steel, handwheel design is user-friendly
Connection - engine end (A)	:	M 20                      1/2" NPT M 20 x 1                R 1/2" M 20 x 1.5             R 3/4" M 20 x 2                3/4" WH M 22                     1" WH M 22 x 1.5             other dimensions on request M 22 x 2
Connection - indicator end	:	suitable for all mechanical and digital engine indicators with standardized thread W 27 x Ø 23.75 / 10 t.p.i.
Weight	:	approx. 0.6 kg

The prestressed spring action of the axially movable valve cone ensures excellent sealing on hot and cold engines. On request the indicator valve can be supplied with a protective cap, corresponding to DIN 6273.

## Dimensions

